

Stoneleigh View

Kenilworth



Linden
HOMES



Stoneleigh View Kenilworth

Development layout

lindenhomes.co.uk

Linden
HOMES

Development layout

Stoneleigh View boasts a stunning range of 2, 3, 4 and 5 bedroom homes each with unique views and aspects. Discover your dream home in Kenilworth today.



● The Lutyens
5 bedroom home



● The Knightley
4 bedroom home



● The Pembroke
4 bedroom home



● The Grainger
4 bedroom home



● The Becket
3 bedroom home



● The Elmslie
3 bedroom home



● The Mountford
3 bedroom home



● The Hardwick
2 bedroom home



● The Cartwright
2 bedroom home

● Apartments

● Bovis Homes development

● Legally completed

● Pre-sold homes

v visitor space

bcp bin collection point

neap neighbourhood equipped area of play

Stoneleigh View

Kenilworth

- | | |
|-----------------------|-----------------------|
| 5 bedroom home | 3 bedroom home |
| The Lutyens | The Becket |
| 4 bedroom home | The Mountford |
| The Knightley | 2 bedroom home |
| The Pembroke | The Hardwick |
| The Grainger | The Cartwright |
| | Apartments |



The streetscene shown on the front has been produced for illustrative purposes only.
Please check the details of the homes you are interested in with the sales consultant.

This plan has been produced for home identification purposes only and is not to scale.
The development layout, landscaping and tenure of all dwellings may be subject to change
throughout the course of the development. Finishes and materials may vary from those
shown on the plan. Please check the details of your chosen plot and housetype with the sales
consultant. Development layout plan correct at time of production.

Vistry South West Midlands region

2 Bromwich Court, Highway Point, Gorsey Lane, Coleshill, Warwickshire B46 1JU. Telephone: 01675 469 290

Produced by the Vistry Group Design Studio.

When you have finished with this brochure please recycle it.

630-CD548 DS14228 / 06.25

Linden
HOMES



Stoneleigh View Kenilworth

Housetypes

lindenhomes.co.uk

Linden
HOMES

The buying process

1

Reserve your home

A reservation fee will secure your home for a 35 day period.

2

After you reserve

Instruct your solicitor and select a mortgage provider to ensure your mortgage offer is in place.

3

Meet the Builder

After you reserve we will book an appointment to take you through every detail of your home.

4

Exchange of contracts

Your solicitor will check all the details of your purchase and will exchange contracts with us.

5

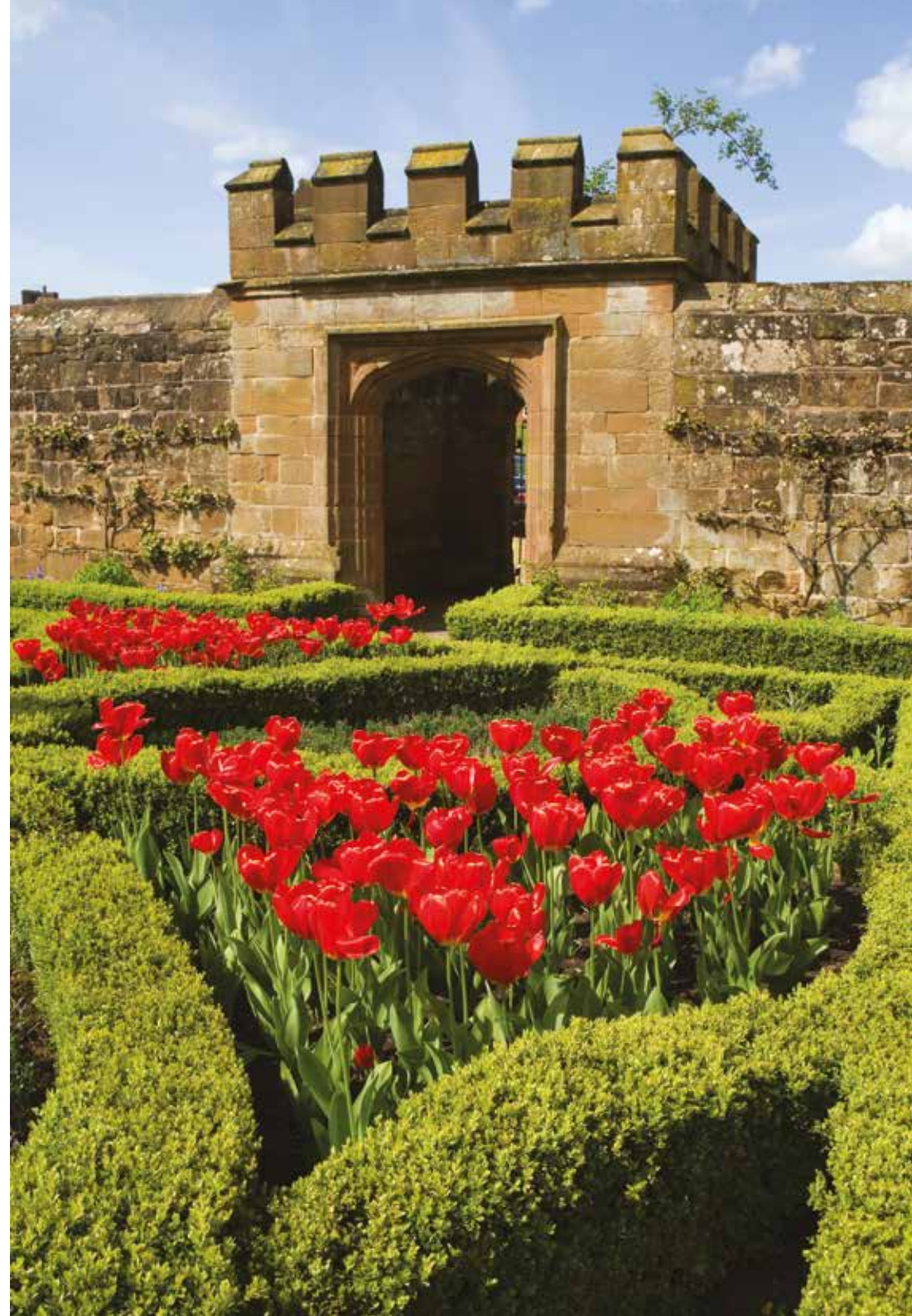
Legal completion

The day you have been waiting for, you will now become the legal home owner once the full cost of the property has been received.



Welcome to Stoneleigh View

This exciting new development is in the charming Warwickshire market town of Kenilworth. Stoneleigh View offers a contemporary collection of 2, 3, 4 & 5 bedroom homes.



The Hardwick

2 bedroom home

Ground floor

Kitchen / dining area
4.08m x 3.15m 13' 5" x 10' 4"

Living room
4.08m x 3.70m 13' 5" x 12' 2"

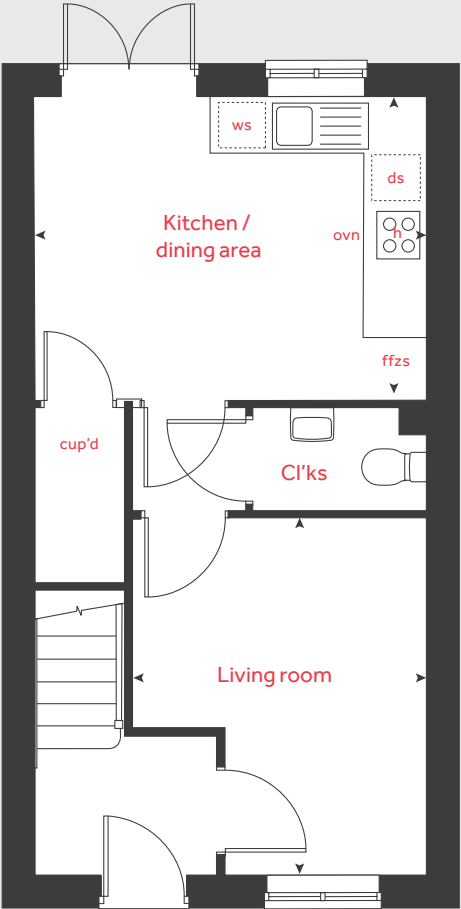
First floor

Bedroom 1
3.15m x 2.99m 10' 4" x 9' 10"

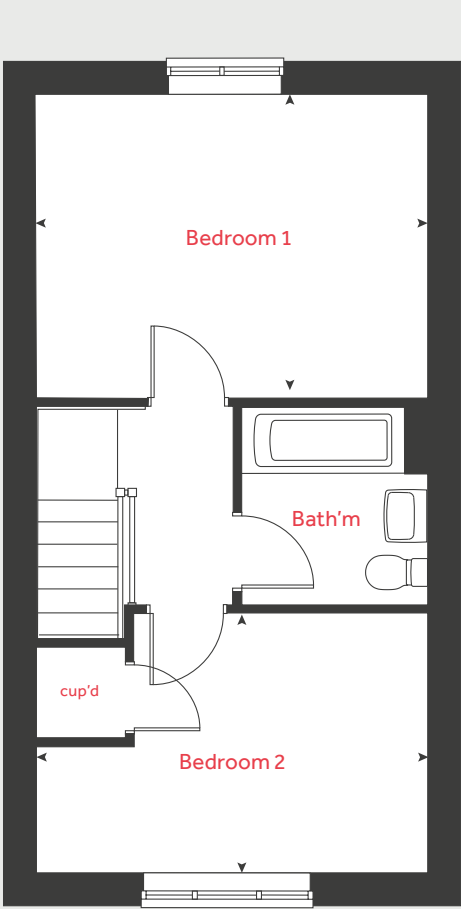
Bedroom 2
4.08m x 2.68m 13' 5" x 8' 10"

h	hob	ffzs	fridge freezer space
ovn	oven	cup'd	cupboard
ws	washing machine space	◀ ▶	measuring points
ds	dishwasher space		

Ground floor



First floor



Please refer to the sales consultant for specific plot details as the illustrations shown are computer generated impressions of how the property may look so are indicative only. External details or finishes may vary on individual plots and homes may be built in either detached or attached styles depending on the development layout. Exact specifications, window styles and whether a property is left or right handed may differ from plot to plot. The floorplans shown are not to scale. Measurements are based on the original drawings. Slight variations may occur during construction.



The Cartwright

2 bedroom home

Ground floor

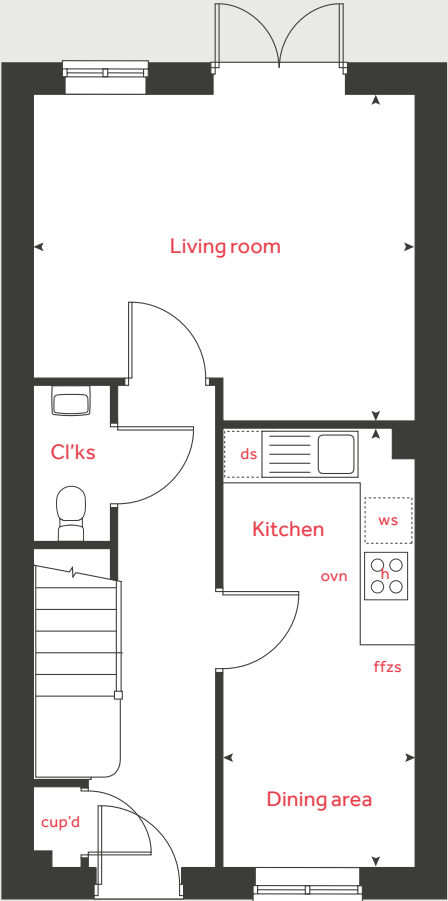
Kitchen / dining area		
4.82m x 2.13m	15' 10" x 7' 0"	
Living room		
4.20m x 3.58m	13' 9" x 11' 9"	

First floor

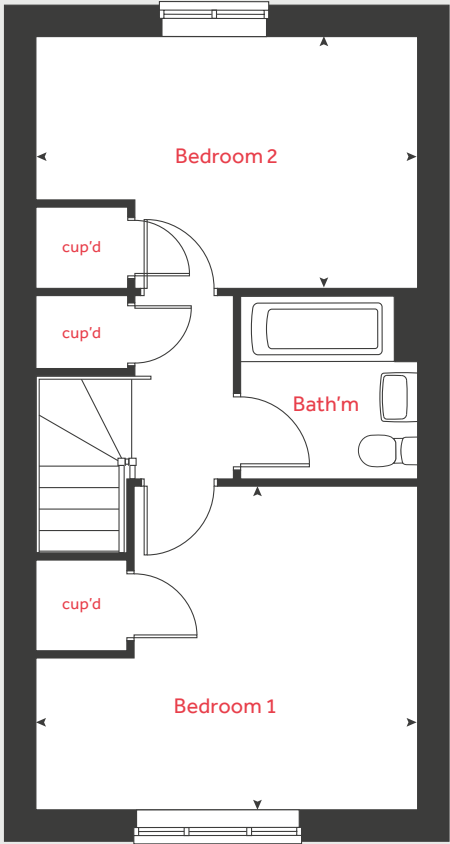
Bedroom 1		
4.20m x 3.58m	13' 9" x 11' 9"	
Bedroom 2		
4.20m x 2.76m	13' 9" x 9' 1"	

h	hob	cup'd	cupboard
ovn	oven	ws	washing machine space
ffzs	fridge freezer space	◀ ▶	measuring points
ds	dishwasher space		

Ground floor



First floor



Please refer to the sales consultant for specific plot details as the illustrations shown are computer generated impressions of how the property may look so are indicative only. External details or finishes may vary on individual plots and homes may be built in either detached or attached styles depending on the development layout. Exact specifications, window styles and whether a property is left or right handed may differ from plot to plot. The floorplans shown are not to scale. Measurements are based on the original drawings. Slight variations may occur during construction.



The Elmslie

3 bedroom home

Ground floor

Kitchen / dining area

4.78m x 2.91m 15' 8" x 9' 6"

Living room

5.09m x 3.63m 16' 9" x 11' 11"

First floor

Bedroom 1

3.66m x 2.86m 12' 0" x 9' 4"

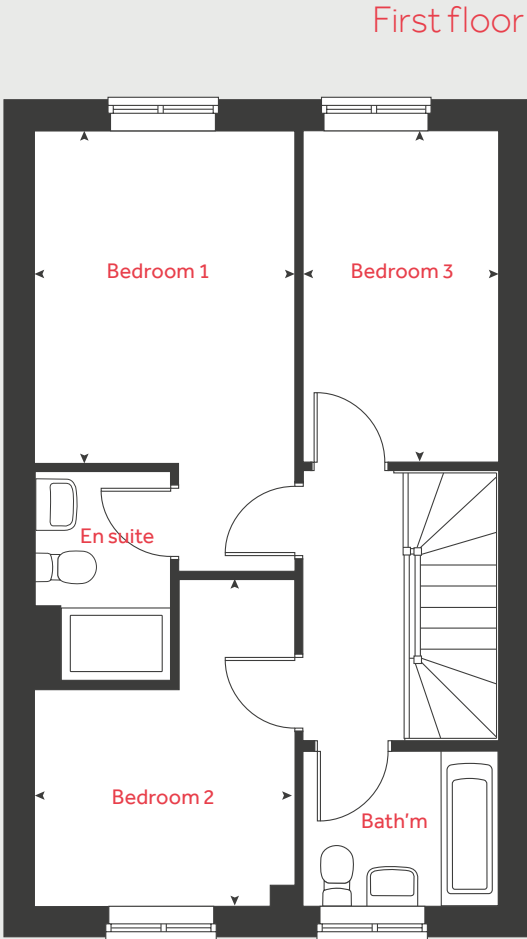
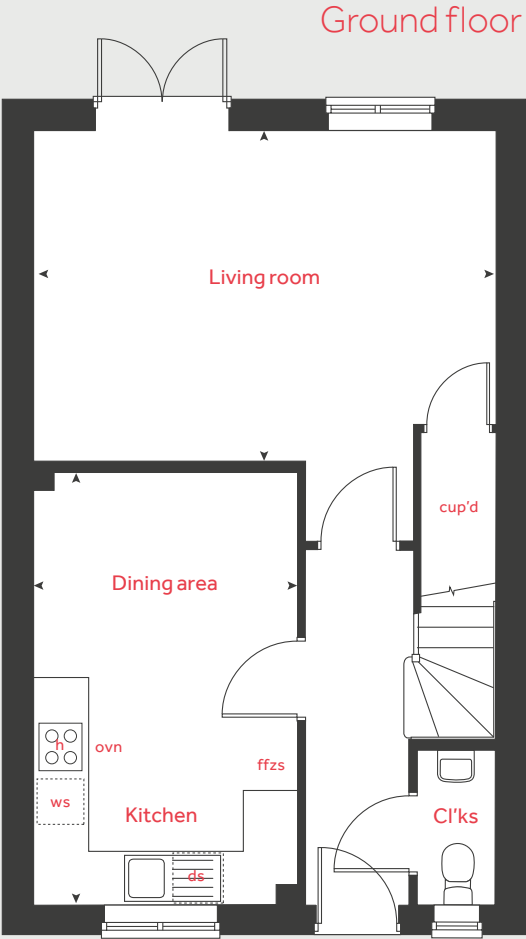
Bedroom 2

2.85m x 2.37m 9' 4" x 7' 9"

Bedroom 3

3.65m x 2.15m 12' 0" x 7' 1"

h	hob	ws	washing machine space
ovn	oven	cup'd	cupboard
ffzs	fridge freezer space	◀ ▶	measuring points
ds	dishwasher space		



Please refer to the sales consultant for specific plot details as the illustrations shown are computer generated impressions of how the property may look so are indicative only. External details or finishes may vary on individual plots and homes may be built in either detached or attached styles depending on the development layout. Exact specifications, window styles and whether a property is left or right handed may differ from plot to plot. The floorplans shown are not to scale. Measurements are based on the original drawings. Slight variations may occur during construction.



The Mountford

3 bedroom home

Ground floor

Kitchen / dining area

5.59m x 2.69m 18' 4" x 8' 8"

Living room

5.59m x 3.11m 18' 4" x 10' 3"

First floor

Bedroom 1

3.35m x 3.12m 11' 0" x 10' 5"

Bedroom 2

3.14m x 2.74m 10' 3" x 9' 0"

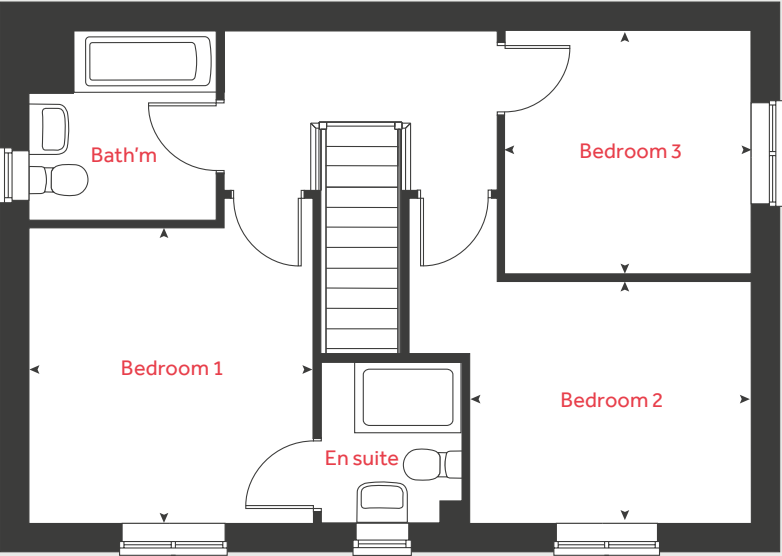
Bedroom 3

2.76m x 2.76m 9' 1" x 9' 1"

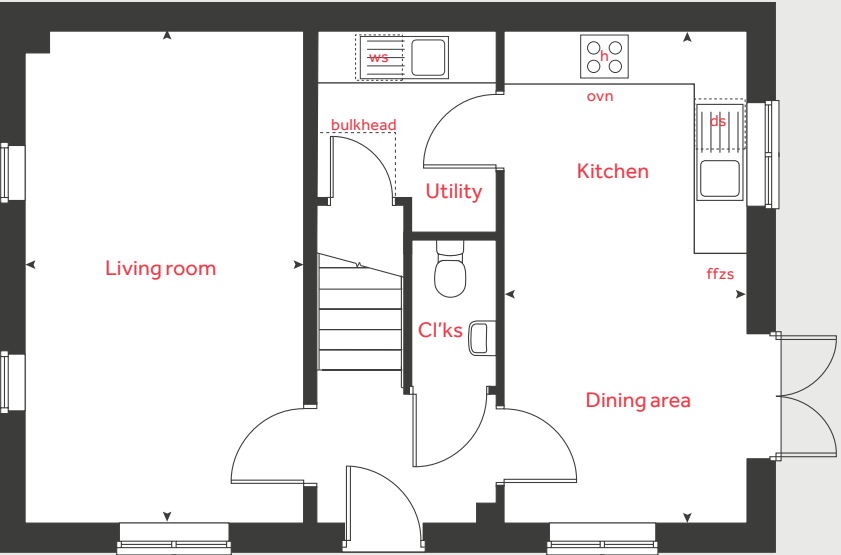
h	hob	ds	dishwasher space
ovn	oven	ffzs	fridge freezer space
ws	washing machine space	cup'd	cupboard
ts	tumble dryer space	◀ ▶	measuring points

Please refer to the sales consultant for specific plot details as the illustrations shown are computer generated impressions of how the property may look so are indicative only. External details or finishes may vary on individual plots and homes may be built in either detached or attached styles depending on the development layout. Exact specifications, window styles and whether a property is left or right handed may differ from plot to plot. The floorplans shown are not to scale. Measurements are based on the original drawings. Slight variations may occur during construction.

First floor



Ground floor





The Becket

3 bedroom home

Ground floor

Kitchen / dining area

5.59m x 2.93m 18' 4" x 9' 6"

Living room

5.59m x 3.33m 18' 4" x 10' 11"

First floor

Bedroom 1

3.43m x 3.39m 11' 3" x 11' 2"

Bedroom 2

3.34m x 2.94m 10' 11" x 9' 8"

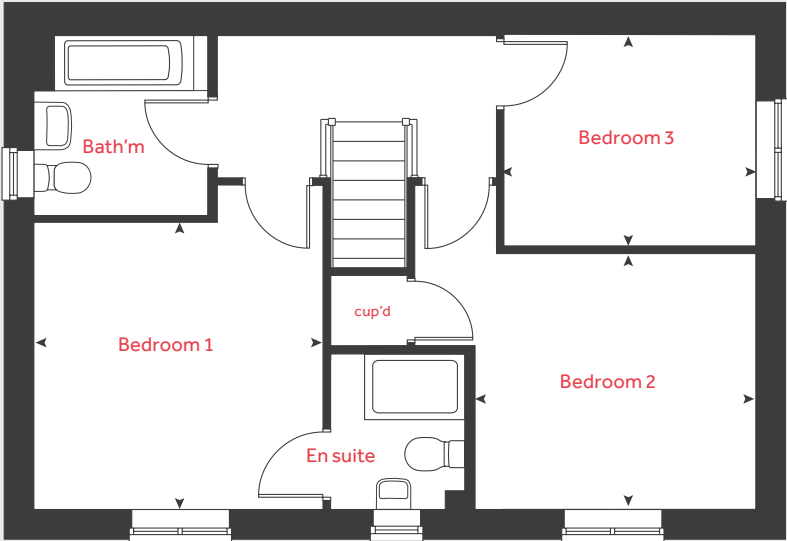
Bedroom 3

2.99m x 2.56m 9' 10" x 8' 5"

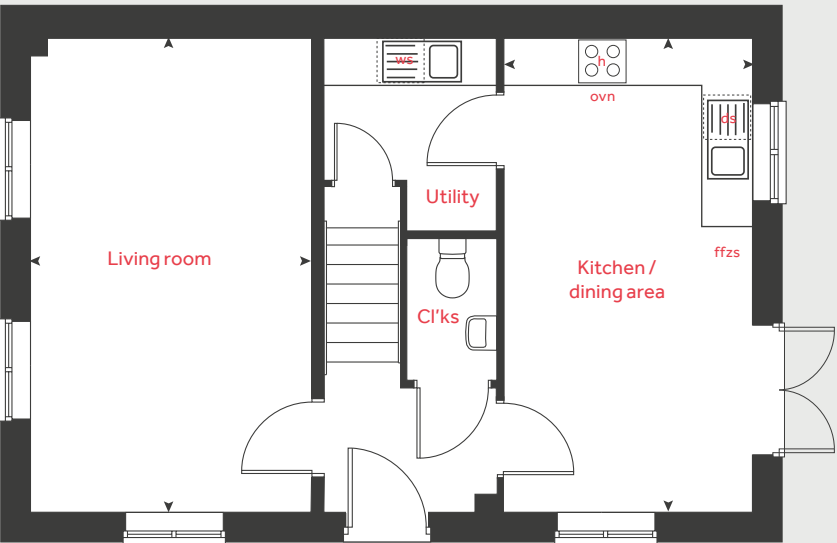
h	hob	ws	washing machine space
ovn	oven	cup'd	cupboard
ffzs	fridge freezer space	◀ ▶	measuring points
ds	dishwasher space		

Please refer to the sales consultant for specific plot details as the illustrations shown are computer generated impressions of how the property may look so are indicative only. External details or finishes may vary on individual plots and homes may be built in either detached or attached styles depending on the development layout. Exact specifications, window styles and whether a property is left or right handed may differ from plot to plot. The floorplans shown are not to scale. Measurements are based on the original drawings. Slight variations may occur during construction.

First floor



Ground floor





The Grainger

4 bedroom home

Ground floor

Kitchen / dining room

5.84m x 3.68m 19' 1" x 12' 1"

Living room

4.39m x 3.90m 14' 5" x 12' 10"

First floor

Bedroom 1

4.01m x 3.90m 13' 2" x 12' 10"

Bedroom 2

4.08m x 3.90m 13' 3" x 12' 7"

Bedroom 3

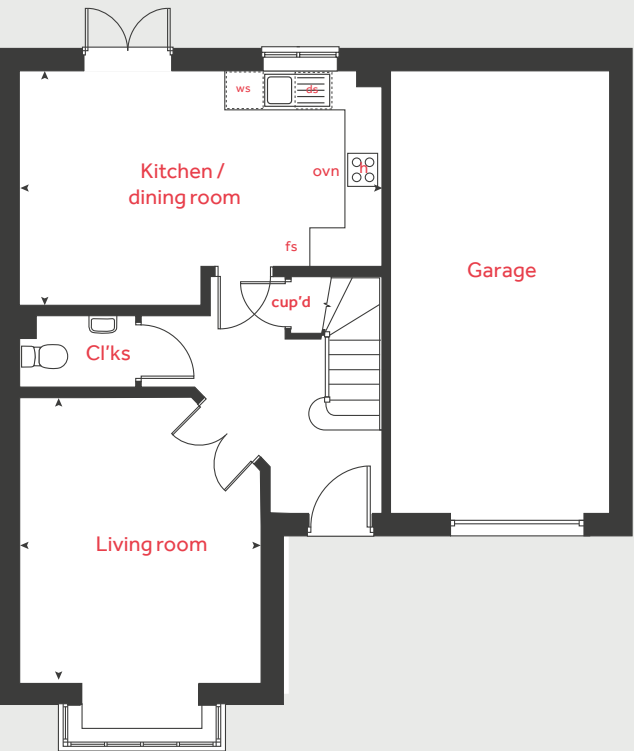
3.63m x 3.08m 11' 9" x 10' 10"

Bedroom 4

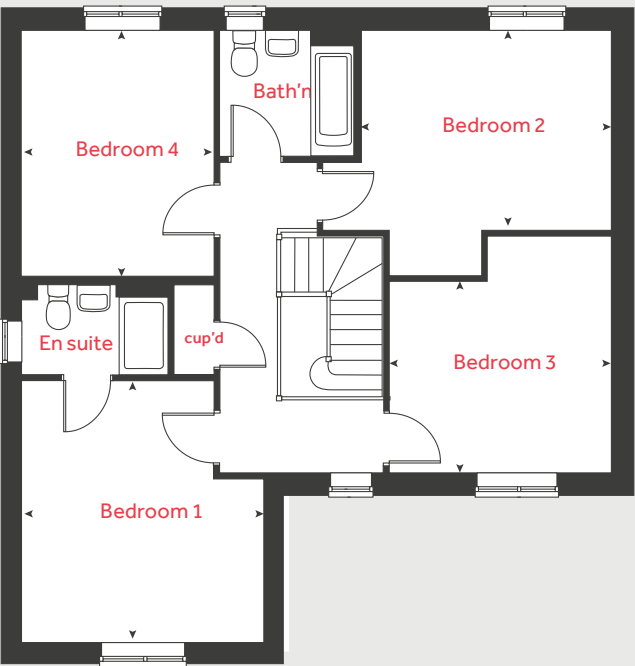
3.79m x 3.11m 12' 5" x 10' 3"

h	hob	ffzs	fridge freezer space
ovn	oven	cup'd	cupboard
ws	washing machine space	◀ ▶	measuring points
ds	dishwasher space		

Ground floor



First floor



Please refer to the sales consultant for specific plot details as the illustrations shown are computer generated impressions of how the property may look so are indicative only. External details or finishes may vary on individual plots and homes may be built in either detached or attached styles depending on the development layout. Exact specifications, window styles and whether a property is left or right handed may differ from plot to plot. The floorplans shown are not to scale. Measurements are based on the original drawings. Slight variations may occur during construction.



The Pembroke

4 bedroom home

Ground floor

Kitchen / family / dining area		
8.07m x 3.36m	26' 6" x 11' 0"	
Living room		
4.83m x 3.48m	15' 10" x 11' 5"	
Study		
2.40m x 2.35m	7' 11" x 7' 9"	

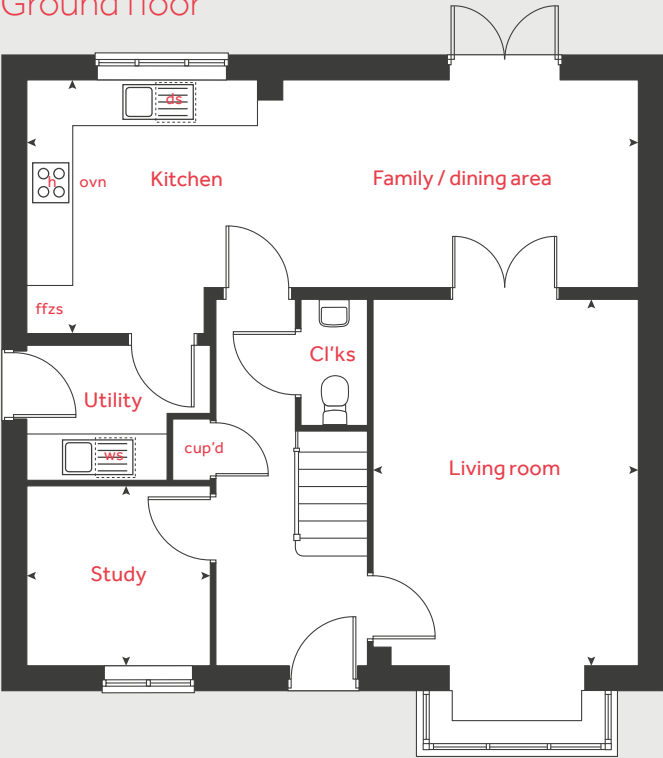
First floor

Bedroom 1		
4.29m x 3.38m	14' 1" x 11' 1"	
Bedroom 2		
4.33m x 3.48m	14' 2" x 11' 4"	
Bedroom 3		
3.35m x 2.87m	11' 0" x 9' 5"	
Bedroom 4		
3.32m x 2.81m	10' 11" x 9' 3"	

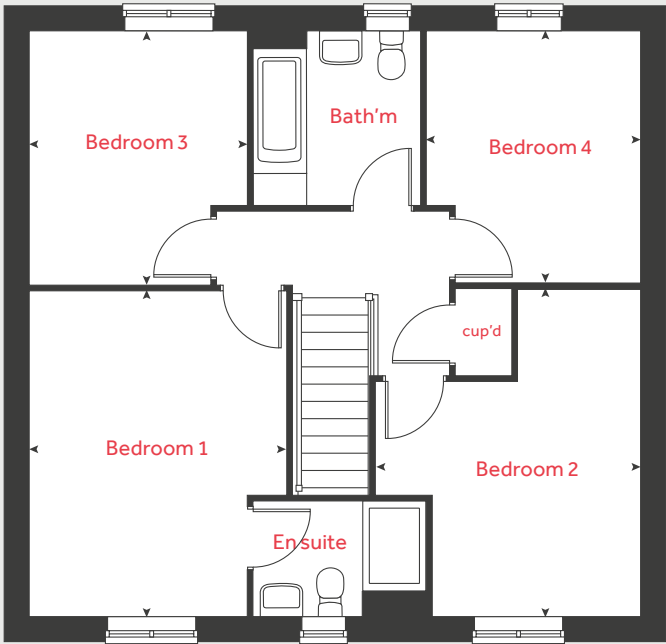
h	hob	ffzs	fridge freezer space
ovn	oven	ts	tumble dryer space
ws	washing machine space	cup'd	cupboard
ds	dishwasher space	◀ ▶	measuring points

Please refer to the sales consultant for specific plot details as the illustrations shown are computer generated impressions of how the property may look so are indicative only. External details or finishes may vary on individual plots and homes may be built in either detached or attached styles depending on the development layout. Exact specifications, window styles and whether a property is left or right handed may differ from plot to plot. The floorplans shown are not to scale. Measurements are based on the original drawings. Slight variations may occur during construction.

Ground floor



First floor





The Knightley

4 bedroom home

Ground floor

Kitchen / dining area

5.25m x 3.20m 17' 2" x 10' 5"

Living room

5.36m x 3.22m 17' 7" x 10' 7"

Family room

3.93m x 3.21m 12' 10" x 10' 5"

First floor

Bedroom 1

3.20m x 2.98m 10' 6" x 9' 10"

Bedroom 2

3.58m x 3.21m 10' 7" x 11' 9"

Bedroom 3

3.17m x 3.01m 10' 5" x 9' 11"

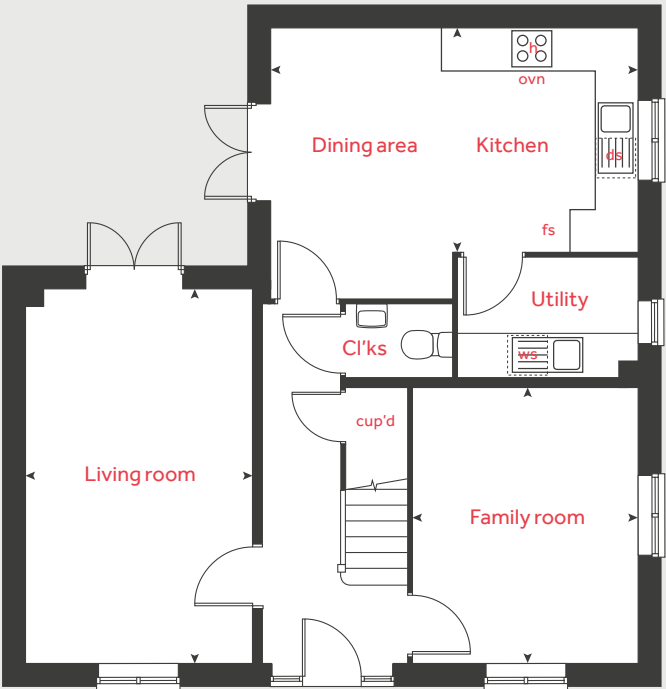
Bedroom 4

3.52m x 2.15m 11' 7" x 7' 1"

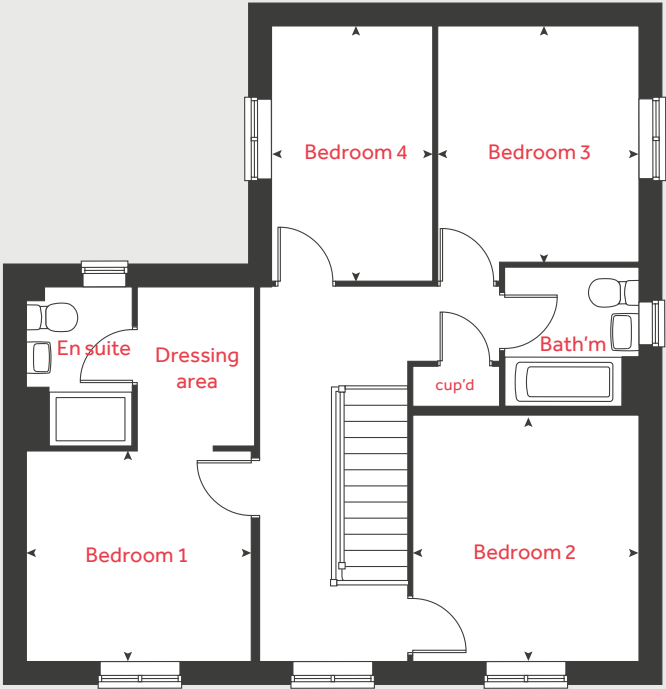
h	hob	fs	fridge freezer space
ovn	oven	cup'd	cupboard
ws	washing machine space	◀ ▶	measuring points
ds	dishwasher space		

Please refer to the sales consultant for specific plot details as the illustrations shown are computer generated impressions of how the property may look so are indicative only. External details or finishes may vary on individual plots and homes may be built in either detached or attached styles depending on the development layout. Exact specifications, window styles and whether a property is left or right handed may differ from plot to plot. The floorplans shown are not to scale. Measurements are based on the original drawings. Slight variations may occur during construction.

Ground floor



First floor





The Lutyens

5 bedroom home

Ground floor

Kitchen	
2.99m x 2.98m	9' 10" x 9' 10"
Living room	
4.82m x 3.39m	15' 10" x 11' 2"
Dining area	
3.73m x 2.81m	12' 3" x 9' 3"
Study	
3.39m x 1.80m	11' 2" x 5' 11"

First floor

Bedroom 2	
3.85m x 3.35m	12' 8" x 11' 0"
Bedroom 3	
3.35m x 2.77m	11' 0" x 9' 1"
Bedroom 4	
3.04m x 2.87m	10' 0" x 9' 5"
Bedroom 5	
3.59m x 2.06m	11' 9" x 6' 9"

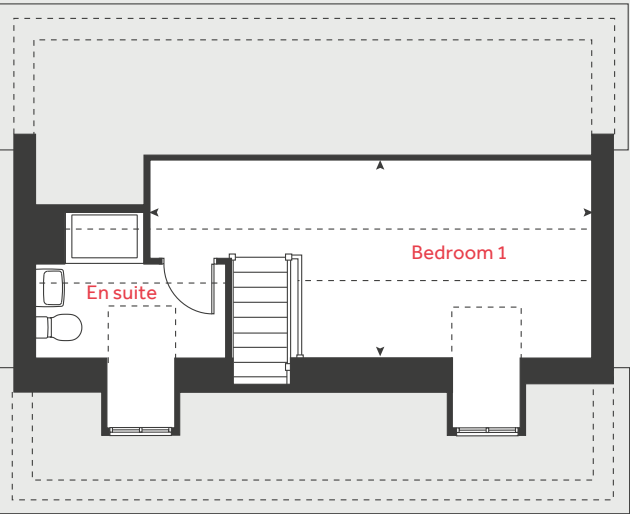
Second floor

Bedroom 1	
6.67m x 3.03m	21' 11" x 9' 11"

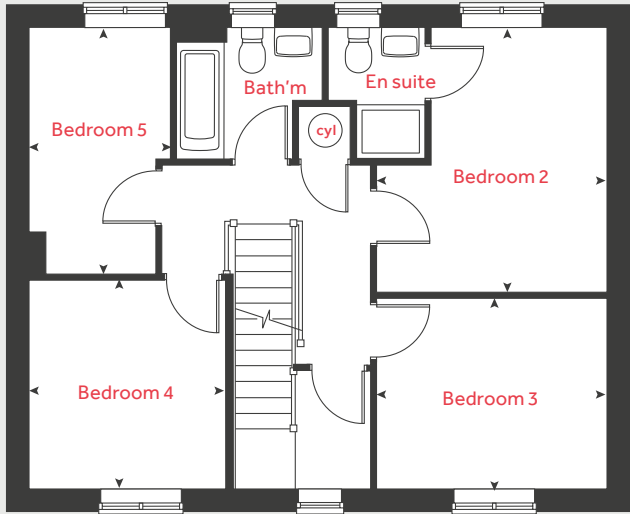
h	hob	cyl	hot water cylinder
ovn	oven	cup'd	cupboard
ffzr	fridge freezer	----	slopping ceiling
dw	dishwasher	◀ ▶	measuring points
wm	washing machine		

Please refer to the sales consultant for specific plot details as the illustrations shown are computer generated impressions of how the property may look so are indicative only. External details or finishes may vary on individual plots and homes may be built in either detached or attached styles depending on the development layout. Exact specifications, window styles and whether a property is left or right handed may differ from plot to plot. The floorplans shown are not to scale. Measurements are based on the original drawings. Slight variations may occur during construction.

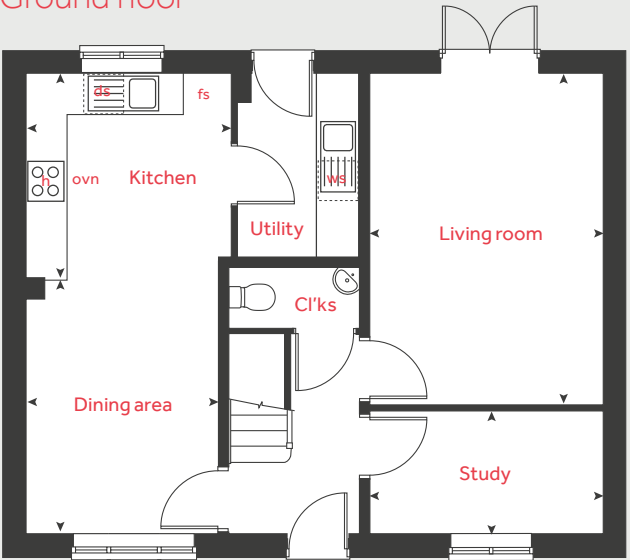
Second floor



First floor



Ground floor







Beautiful spaces for you to **Enhance**

There's nothing more exciting than reserving your new Linden home.

With Enhance, there is even more reason to look forward to moving day.

Enhance offers you the chance to personalise your new home with a wide range of options and upgrades available, it suits your needs and wants perfectly and so moving day can't come quick enough!

From customising your kitchen with stylish cupboards and worktops to having the latest modern appliances make your home more your own with **Enhance**.

Choose your tiles in the bathroom or complete your bedroom with fitted wardrobes.

Whatever your style, it's your canvas to make your own and allow your personality to sing.

The best thing is that you don't have to decide all this at the time of reserving - you can think about how you want your new home to look in the comfort of your current home. The availability of items is subject to the stage of build, and can vary by development and house type. Our sales consultants will be happy to provide you with guidance.

We're here to help you make it completely unique, so express yourself with **Enhance**.

Stoneleigh View

Kenilworth CV8 2SB



- 1 Kenilworth Castle
CV8 1NG
- 2 Thorns Infant School
CV8 2DS
- 3 Talisman Square Shopping Centre
CV8 1JB
- 4 Priory Theatre
CV8 1BN
- 5 Stoneleigh Abbey
CV8 2LF
- 6 Kenilworth Golf Club
CV8 2EA
- 7 Abbey Fields Park and Garden
CV8 1BP
- 8 Warwick Parkway Railway
CV35 8RH
- 9 Kenilworth Woods
CV8 2AH
- 10 Warwick Racecourse
CV34 6HN
- 11 Meadow Community Sports Centre
CV8 2DA



The streetscene shown on the front has been produced for illustrative purposes only.
Please check the details of the homes you are interested in with the sales consultant.

Countryside Partnerships South West Midlands region

2 Bromwich Court, Highway Point, Gorsey Lane, Coleshill, Warwickshire B46 1JU. Telephone: 01675 469 290

Produced by the Vistry Group Design Studio.

When you have finished with this brochure please recycle it.

630-CD548 DS12503 / 02.25

Linden
HOMES